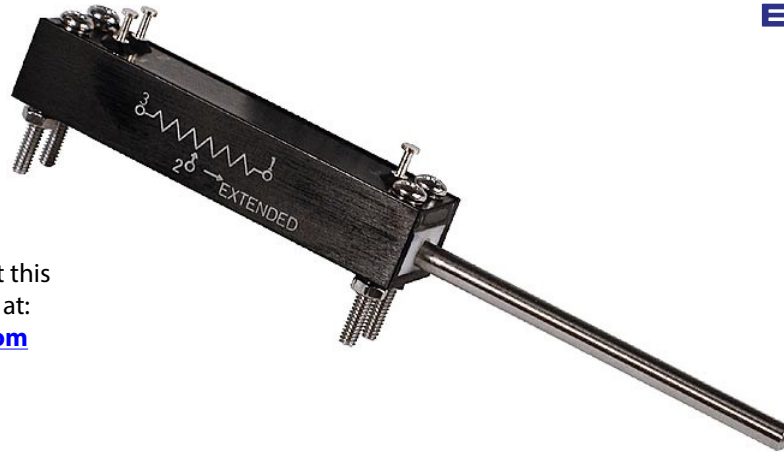


LW12 Wirewound Linear Potentiometer



For more information about this product, visit our website at: www.potentiometers.com

LW12 linear potentiometers feature Wirewound resistive elements. Provides better stability and tolerance, and lower temperature coefficients

Features

- Wirewound resistive element
- Stroke Length: 12mm, 25mm, 50mm, 100mm
- Spring return optional
- Bronze bearings
- Aluminum black anodized case, plastic lid
- Stainless steel shaft - threaded or plain
- Gold plated brass terminals

Electrical Specifications

Resistance Range: 100 to 50K ohms standard
Resistance Tolerance: $\pm 5\%$
Insulation Resistance: 1,000 Megohms @ 500VDC
Dielectric Strength: 500 VAC min.
Linearity:
 LW12-12: $\pm 1.5\%$
 LW12-25: $\pm 1.0\%$
 LW12-50: $\pm 0.7\%$
 LW12-100: $\pm 0.5\%$
Power Rating:
 LW12-12: 0.25 watt
 LW12-25: 0.5 watt
 LW12-50: 1.0 watt
 LW12-100: 2.0 watt

Mechanical Specifications

Stroke Length: 1/2", 1", 2", 4"
Shaft: Stainless steel - plain, chamfered, or threaded (#4-40 or #5-40)
Friction: 3.6 oz
Stop strength: 20 oz. min.
Weight: 10 to 35 grams

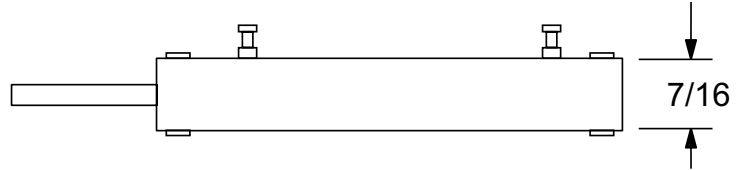
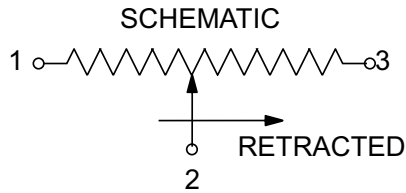
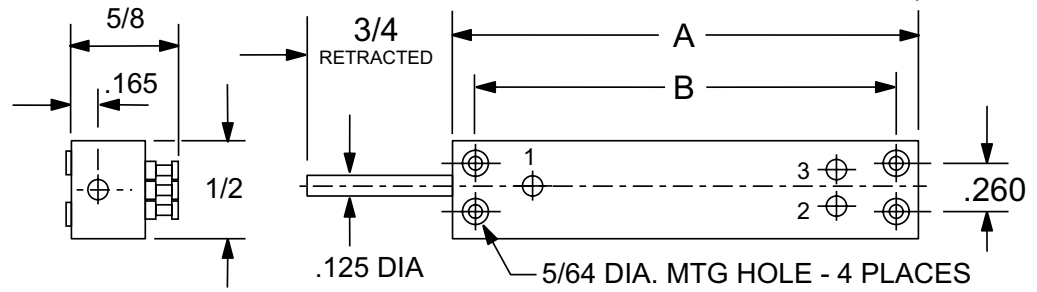
Environmental Specifications

Temperature Coefficient: ± 20 PPM/ $^{\circ}\text{C}$

LW12 Wirewound Linear Potentiometer

DIMENSIONS

	A	B
LW12-12	1.50	1.26
LW12-25	2.00	1.77
LW12-50	3.00	2.75
LW12-100	5.00	4.76



Ordering Information

Example Part Number: **LW12-P-25-10K**

LW12	P	25	10K	SB
Model	Shaft Style	Stroke Length	Resistance	Options
LW12	P = Plain PS = Plain with Ext. Spring Return C = Chamfered CS = Chamfered with Ext. Spring Return A = Threaded #4-40 B = Threaded #5-40 with Int. Spring Return	12 = 12mm 25 = 25mm 50 = 50mm 100 = 100mm	100 = 100 ohms 200 = 200 ohms 500 = 500 ohms 1K = 1K ohms 2K = 2K ohms 5K = 5K ohms 10K = 10K ohms 20K = 20K ohms* 50K = 50K ohms**	SB = Sealed Body

For more information about this product, visit our website at: www.potentiometers.com

