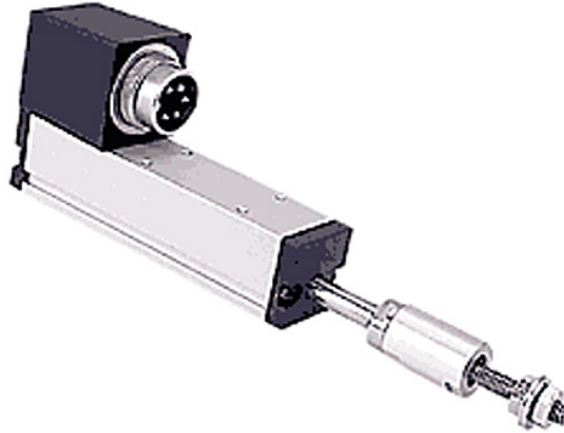


# LCP18 Conductive Plastic Linear Potentiometer



For more information about this product, visit our website at: [www.potentiometers.com](http://www.potentiometers.com)

## ***Series LCP18 linear potentiometers feature a Conductive Plastic Element***

Shown with optional Universal Connector and threaded shaft with swivel joint

### **Features**

- Conductive Plastic resistive element
- Stroke Length: 15mm, 30mm, 50mm, 100mm, 150mm, 200mm
- Aluminum black anodized case, plastic lid
- Stainless steel shaft - threaded or plain
- Gold plated brass terminals

### **Electrical Specifications**

Resistance Range: 500 to 20K ohms standard  
Resistance Tolerance:  $\pm 10\%$   
Resolution: Essentially infinite  
Insulation Resistance: 1,000 Megohms @ 500VDC  
Dielectric Strength: 1 Min @ 900VAC  
Linearity:  
LCP18-15:  $\pm 0.7\%$   
LCP18-30:  $\pm 0.7\%$   
LCP18-50:  $\pm 0.4\%$   
LCP18-100:  $\pm 0.3\%$   
LCP18-150:  $\pm 0.3\%$   
LCP18-200:  $\pm 0.2\%$   
Power Rating:  
LCP18-15: 0.3 watt  
LCP18-30: 0.6 watt  
LCP18-50: 0.75 watt  
LCP18-100: 1.25 watts  
LCP18-150: 1.5 watts  
LCP18-200: 2.0 watts

### **Mechanical Specifications**

Mechanical/Electrical Stroke Length:

LCP18-15:	.591
LCP18-30:	1.18
LCP18-50:	1.968
LCP18-100:	3.937
LCP18-150:	5.906
LCP18-200:	7.874

Mechanical Stroke length:  $\pm .080/-0$

Electrical Stroke length:  $\pm .020$

Shaft: Stainless steel

Stop strength: 20 lbs min.

Friction: 3.6 oz

Weight: 10 to 35 grams

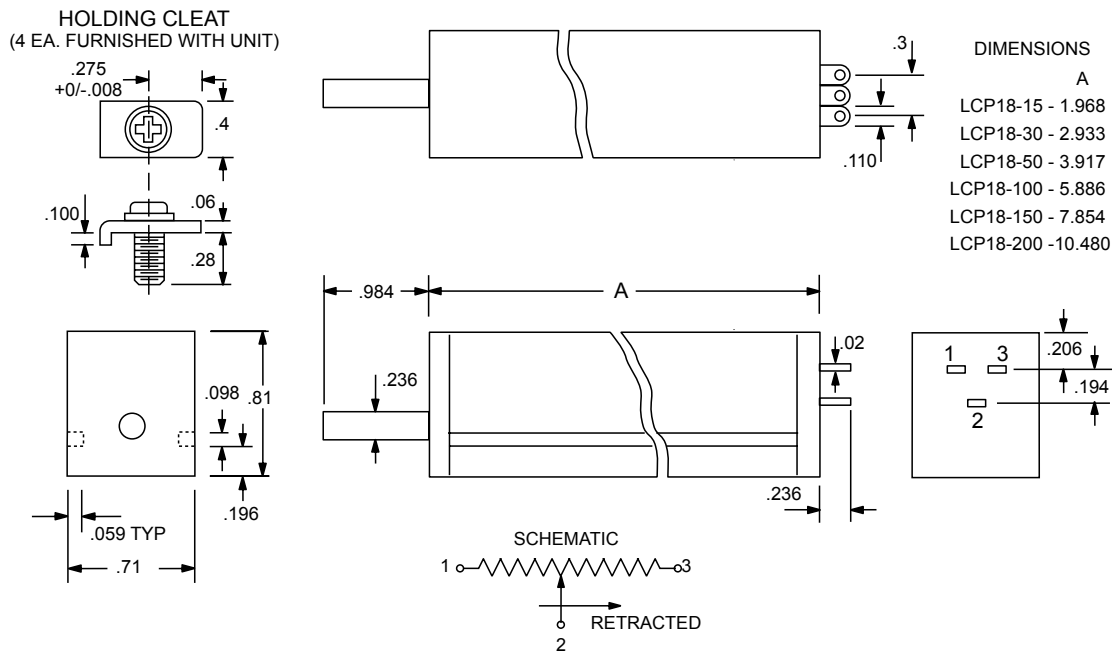
Life Expectancy: 20,000,000 strokes

### **Environmental Specifications**

Temperature Range:  $-30^{\circ}\text{C}$  to  $+105^{\circ}\text{C}$

Temperature Coefficient:  $\pm 400$  PPM/ $^{\circ}\text{C}$

# LCP18 Conductive Plastic Linear Potentiometer



## Ordering Information

Example Part Number: **LCP18-30-10K-S**

LCP18	30	10K	S
<b>Model</b>	<b>Stroke Length</b>	<b>Resistance</b>	<b>Options</b>
<b>LCP18</b>	15 = 15mm 30 = 30mm 50 = 50mm 100 = 100mm 150 = 150mm 200 = 200mm	500 = 500 ohms 1K = 1K ohms 2K = 2K ohms 5K = 5K ohms 10K = 10K ohms 20K = 20K ohms	S = M-4 Threaded Shaft with External Spring Return SB = Sealed Body UC = Universal Connector

For more information about this product, visit our website at: [www.potentiometers.com](http://www.potentiometers.com)

**STATE**  
**ELECTRONICS**