

**Model 6371, 6373**  
**1-5/16" Diameter**  
**Single Turn, Conductive Plastic**  
**Precision Potentiometer / Position Sensor**  
**Anodized Aluminum Housing**  
**Front and Rear Ball Bearings**



For more information about this product, visit our website at: [www.potentiometers.com](http://www.potentiometers.com)



**Model Styles**

6371	1/4" Shaft, 3/8" Bushing
6373	1/4" Shaft, Servo

**Electrical Specifications <sup>1</sup>**

Resistance Range, Ohms	1K to 300K
Standard Resistance Tolerance	±10%
Minimum Practical Resistance Tolerance	±5%
Independent Linearity <sup>2</sup>	±0.5%
Minimum Practical Independent Linearity	±0.1%
Input Voltage, Maximum	400Vdc not to exceed power rating
Power Rating, Watts	2.0 at 70°C derating to 0 at 125°C
Dielectric Strength	1,000V rms
Insulation Resistance, Minimum	1,000 Megohms
Output Smoothness, Maximum	0.1%
Actual Electrical Travel, Nominal	348°
Electrical Continuity Travel, Minimum	350°
End Voltage, Maximum	0.35% of Input Voltage
Tap Tolerance	0.5% of Input Voltage
Resolution	Essentially infinite
Temperature Coefficient <sup>3</sup>	-400 ppm/°C typical
Temperature Coefficient of Output Voltage <sup>4</sup>	±10 ppm/°C typical

<sup>1</sup> Specifications subject to change without notice.  
<sup>2</sup> Linearity is measured between 1% and 99% of input voltage.  
<sup>3</sup> Special tempco available to ±100ppm/°C..  
<sup>4</sup> Measured with 10 VDC CW to CCW and slider at 50% of electrical travel.

## Model 6371, 6373

### Environmental (MIL-R-39023)

Operating Temperature Range	Static: -65°C to +125°C Dynamic: -40°C to +125°C
Temperature Cycling	5 cycles, -65°C to +125°C (10% ΔR)
Shock, 6ms Sawtooth	100G's (0.1ms discontinuity max.)
Vibration	15G's, 10 to 2,000 Hz (2% ΔR, 0.1ms discontinuity max.)
Moisture Resistance	Ten 24 hour cycles (10% ΔR)
High Temperature Exposure	1,000 hours at 125°C (0.5% ΔR)
Rotational Load Life	5 mil. shaft rev. +900 hrs. at rated wattage at 70°C (10% ΔR)

### Mechanical Specifications

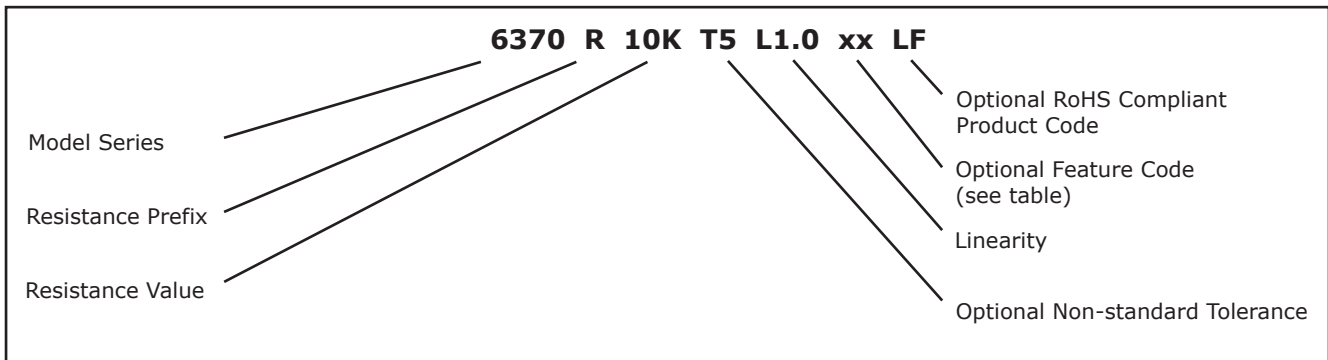
Total Mechanical Travel	360° continuous
Number of Gangs, Maximum	1
Weight, Nominal	2.0 oz.
Shaft Runout, T.I.R., Maximum	.001"
Pilot Diameter Runout, T.I.R., Maximum	.0015"
Lateral Runout, T.I.R., Maximum	.002"
Shaft Radial Play, Maximum	.002"
Start/Run Torque, Maximum	0.7 / 0.5 oz.-in.

### Special Features

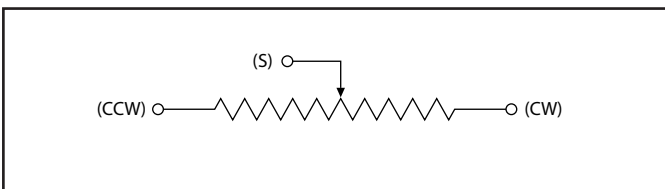
Center Tap	CT
Linearity Tape	LT
Flatted Shaft	FS
Slotted Shaft	SS
Rear Shaft Extension	RS
Additional Gangs	2G, 3G, or 4G

# Model 6371, 6373

## Ordering Information



## Circuit Diagram



## Standard Resistance Values, Ohms

1K                      2K                      5K                      10K                      20K                      50K.

# Model 6371, 6373

## Outline Dimensions (Inch/mm)

